



January 2023 Newsletter

Dear Parents and Carers

We hope that you and your child had a wonderful Christmas break and wish you all a Happy New Year! We are delighted to be back and are looking forward to another busy and enjoyable term together here at Knockbreda Nursery School.

Many thanks for the lovely gifts and cards we received before the Christmas break, they were sincerely appreciated by us all. Thank you also for your generous support for our Christmas Jumper Day; we are delighted to let you know that Nursery raised £78.40 for Save the Children Fund as a result.

Themes

This half-term, our learning theme will cover winter, darkness, stars, space, winter trees, snowflakes/ ice, birds, moss and love. In Nursery, we will be enjoying melting ice in the water tray, taking part in seasonal investigations outdoors, creating winter craft and learning all about the season of winter. We will also be focusing on shapes, learning the names of the shapes and counting the number of sides and corners each shape has. To support this theme you will find learning links on our school website and we have included some of the songs and rhymes at the end of this Newsletter so that you can share them with your child at home. We will also be taking part in the Big Garden Birdwatch 2023 towards the end of January and finding out all about different birds and how to look after them.

Nursery staff have also created a Parent/Carer support booklet to accompany this Nursery term. A copy of the Term 2 Support Booklet will be available on the website.

Guests/ Visitors

This half term we are very much looking forward to Mr Hullabaloo visiting our Nursery with his Winter Show on Monday 16th January 2023.

Getting Ready to Learn and Special Helpers

Last term, each child got the chance to be a 'Special Helper' for the week. Special Helpers assist with the daily routines, such as setting the table for lunch and showing others how to share and how to tidy away. When your child is the 'Special Helper' they will receive a badge on the first day of their week which they can wear all week and then return on Friday.

They also received a **'Special Helper Bag'**. Each Friday we will lend the Special Helpers a Red Knockbreda Nursery School bag filled with stories and puppets for you all to enjoy at home over the weekend. This links to our Getting Ready to Learn initiative and is also a positive reward for your child. Please enjoy using these resources at home and **return them to school on Monday morning.**

This term we will send home a foundation pack to each pupil with activities for your child to complete at home if they wish. These activities link to different areas of the curriculum and can be completed as and when is suitable for you. As these are lending resources, please return the bags and contents no later than **Friday 10th February 2023.**

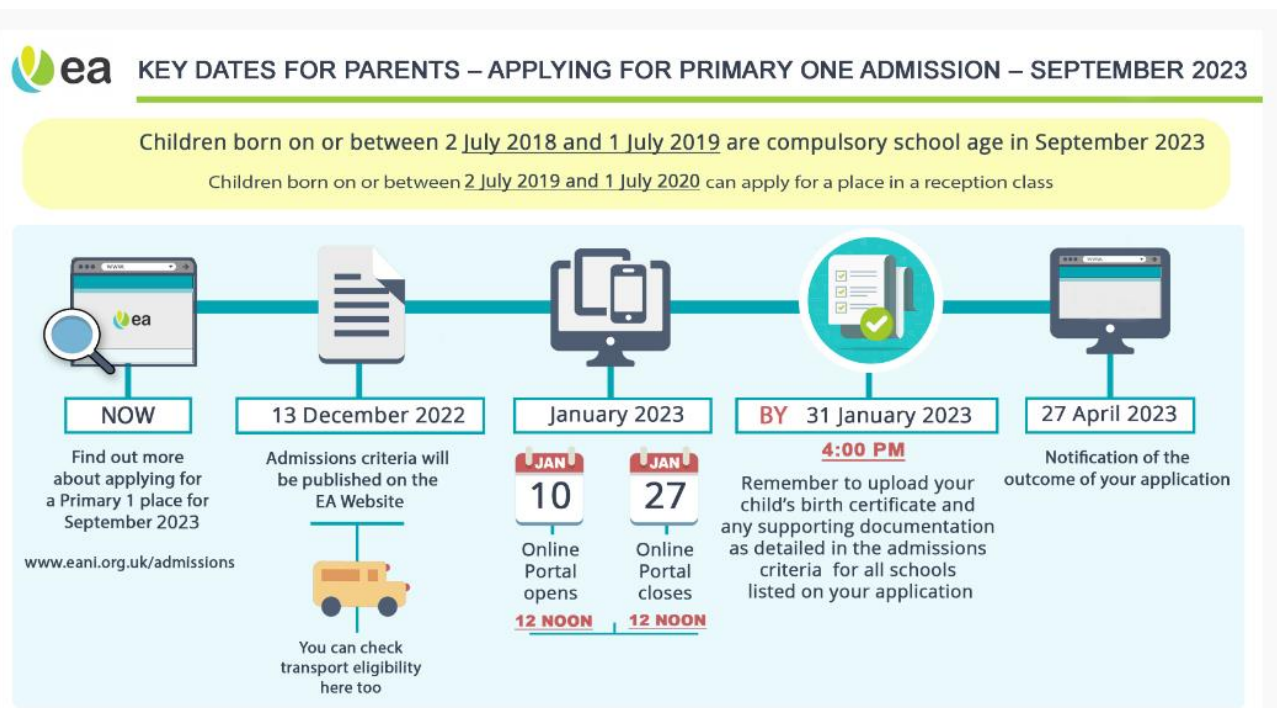
Parent Consultations

Face to face parent consultations will take place on Monday 6th, Tuesday 7th, and Wednesday 8th of February. To facilitate these meetings, the children will finish at **11am** on each of those dates. If you would prefer a telephone appointment, please let us know as soon as possible and advise the preferred telephone number to be used.

P1 Applications

Applications for your child's Primary 1 place can soon be made online through the EA Portal - the link is detailed below for your convenience. The opening date is Tuesday 10th January 2023 12noon and the closing date for applications is 12noon on Friday 27th January 2023.

[Admissions | Education Authority Northern Ireland \(eani.org.uk\)](https://www.eani.org.uk)



This is also the period for Nursery Applications and if you are aware of any parents considering Knockbreda Nursery School for their child next year it would be appreciated if you could let them know that all of the information and our “Day in the Life” video can be viewed on our website through the link below:

<https://www.knockbredanursery.co.uk/admissions>

Our Open Day is **Wednesday 18th January 2pm until 3.30pm.**

Contact with School and Illness

Staff are always available to offer support and answer queries, however if outside the School Office hours (9.15am – 12.15pm), it would be appreciated if these could be communicated to school using our email address: info@knockbredanursery.co.uk.

Classroom staff cannot answer the telephone while they are settling the children or during Welcome time as this is disruptive to the children. We will be happy to arrange a suitable time to speak with you.

In line with our Attendance Policy, if your child is absent for any reason please fill in the ‘Reporting Absence From School’ online form under the Parent tab on the school’s website:

<https://www.knockbredanursery.co.uk/reporting-absence-from-school>

In addition to Covid-19, both flu and Strep A are currently circulating at high levels and all are easily spread. Please use your judgement in such situations, and note that current medical advice is that you do not send your child into Nursery when they are unwell and/or have a fever. The Nursery day is busy and active and it will cause your child discomfort if they attend when feeling unwell. Nursery staff are unable to provide the level of one to one care needed to support an unwell child throughout a full day at school. Sending an unwell child into Nursery also places pupils and staff at risk of infection which may mean they are unable to attend Nursery and your child may have to be cared for by unknown/ supply staff.

Thank you for all of your support during this time. We are looking forward to another successful Term!

School Fund

For those families making their School Fund contributions on a termly basis, this term’s payment of £50 is due on 16th January and should be paid through the SchoolMoney system. This fund is used to pay for all additional resources and activities that are not covered by school’s delegated budget.

Dates for your diary 2023:

Date	Time	Event
Monday 16th January	All Day	Mr Hullabaloo Winter show
Wednesday 18th January	2-3.30pm	Open Day for new parents
Tuesday 24th January		Health Visitor will visit school. More information to follow.
Monday 6th to Wednesday 8th February	11am finish	Parent/Carer Consultation Meetings. This is an opportunity to speak with your child's Class Teacher. Children will finish at 11am. No lunches will be served on these days.
Friday 10th February	Finish at 11am No school meals.	Half-term holiday from Monday 13th February until Friday 17th February 2023. School re-opens on Monday 20th February as normal.
Thursday 2nd March	All day	World Book Day- Dress as your favourite book character and donate to Book Aid.
Friday 17th March Monday 20th March	Closed	School closed for staff training and St Patrick's Day Children return Tuesday 21st March 2023 as normal
Wednesday 5th April	Finish at 11am No school meals.	Easter egg hunt. School closes for Easter and will re-open on Thursday 20th April 2023, as normal.
Monday 1st May	Closed	School closed for May Day.
Monday 8th May	Closed	School closed for the Bank Holiday.
Monday 22nd May	All day	World Day for cultural diversity. Celebrate with us as we learn about different cultures from around the world.
Friday 26th May - Tuesday 30th May	Closed	School closed for the Bank Holiday. Children will return to school as normal on Wednesday 31st May 2023.
Monday 5th, Tuesday 6th and Wednesday 7th June	11am finish	Parent/Carer Consultation Meetings. An optional final term discussion meeting. Children will finish at 11am. No lunches will be served on these days.
Friday 9th June	All day	Hats and Shades day.
Thursday 15th June		Red Apples Celebration show at 11am. Green Apples finish at 10.30am. No lunches will be served on this day.
Friday 16th June		Green Apples Celebration show at 11am. Red Apples finish at 10.30am. No lunches will be served on this day.
Friday 30th June	11am finish	School closes for summer. No lunches will be served on this day.

Winter Songs and Rhymes

A Great Big Snowman

There was a great big snowman

(hold arms out wide)

Who had a carrot nose

(with one hand make a pinching motion and pull it out from your nose to insinuate a carrot shape)

Along came a bunny

(hold up two fingers and make a hopping motion)

And what do you suppose?

(shrug shoulders)

That hungry little bunny

(rub tummy)

Was looking for his lunch

(hold one hand over eyes and look around)

He ate that snowman's nose....

Nibble, nibble CRUNCH!

(use hand to make a chomping mouth action at your nose)



5 Little Penguins

5 Little penguins slipping on the ice
One fell down, that's not nice.
Mama called the doctor and the doctor said,
"No more penguins slipping on the ice."

4 Little penguins slipping on the ice
One fell down, that's not nice.
Mama called the doctor and the doctor said,
"No more penguins slipping on the ice."

3 Little penguins slipping on the ice
One fell down, that's not nice.
Mama called the doctor and the doctor said,
"No more penguins slipping on the ice."

2 Little penguins slipping on the ice
One fell down, that's not nice.
Mama called the doctor and the doctor said,
"No more penguins slipping on the ice."



1 Little penguin slipping on the ice
One fell down, that's not nice.
Mama called the doctor and the doctor said,
"No more penguins slipping on the ice."

No more penguins slipping on the ice
None fell down, that's real nice.
Mama called the doctor and the doctor said,
"No more penguins slipping on the ice."



STAR BREATHING

Follow the points of the star with your finger to inhale and exhale. This slows down breathing and helps with self regulation.

